



88-8 HEAVY DUTY LAMINATED RUBBER

- Laminated rubber pads are woven on 3/4" rods & compressed between 1/4" steel plates.
- Contoured to fit tire & reversible
- Steel clip with 3/4" hole for easy chain attachment.
- Fully meets OSHA requirements.
- Five year warranty against manufacturing defects.



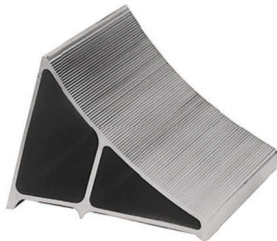
68-9 MOLDED RUBBER

- Molded from tough fiber-reinforced rubber compound.
- Steel eyebolt allows easy chain attachment.
- Color: Black
- Also Available in orange (68-9-OR)
- One year warranty against manufacturing defects.



811-7 URETHANE

- Light weight & heavy duty.
- Molded urethane chocks contoured to fit truck tires.
- Designed to grip both the tire & the pavement.
- Color: Orange
- One year warranty against manufacturing defects.



SC-8 ALUMINUM

- Light weight, non-sparking extruded aluminum.
- Surface gripping teeth on underside.
- One year warranty against manufacturing defects.

Ordering Information

Model	Width	Height	Length	Wt. Lbs.	Color
88-8	8"	8"	8"	14	Black
68-9	8"	5 3/4"	9"	7.5	Black
68-9-OR	8"	5 3/4"	9"	11	Orange
811-7	11 3/8"	8 1/4"	7 5/8"	6.5	Orange
SC-8	11 5/8"	8"	7"	6.25	Aluminum

NOTE: Additional wheel chocks available.

WHEEL CHOCK ACCESSORIES

- *3/16" Corrosion Resistant Security Chain* with wall attachment clip. Chain keeps chock readily accessible and deters theft. Available 10', 12', 15', 20' and custom lengths.
- *Wheel Chock Hanger* - Heavy duty hanger 5" x 3" x 14" holds chock securely on wall.
- *Wheel Chock Safety Sign* - 10" x 14" aluminum "Caution Truck Wheels Must Be Chocked"

Updated September 2012

75 North Pleasant Street • Norwalk, OH 44857
 800-537-1603 • Local 419-668-8138
 Fax: 800-537-6287 • Local Fax 419-668-8068
www.durablecorp.com • [sales@durablecorp.com](mailto:sales@ durablecorp.com)